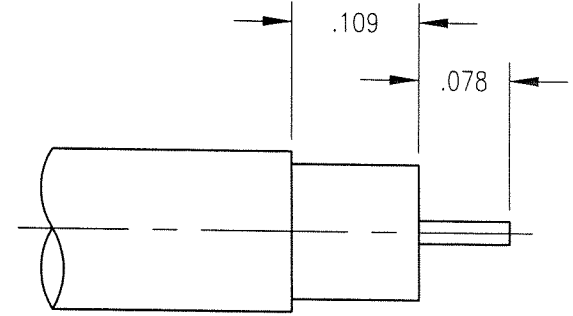
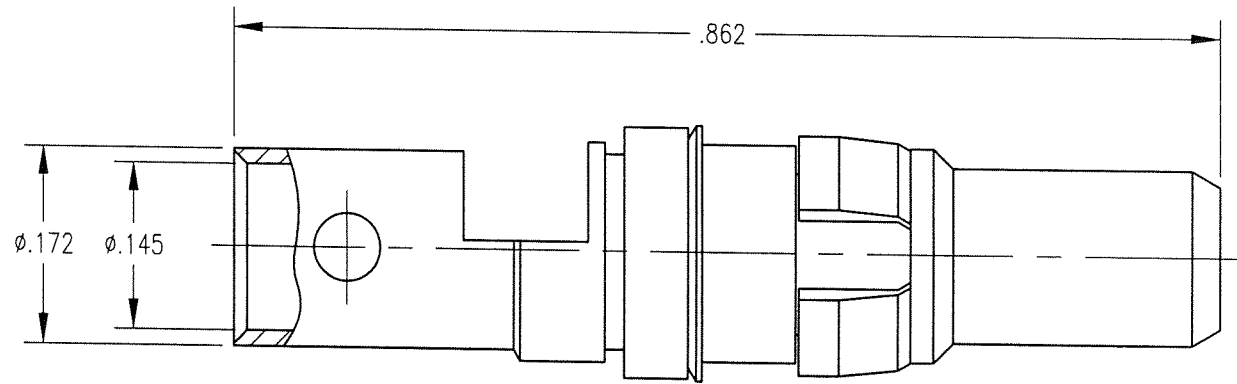
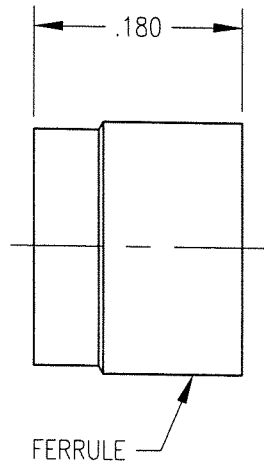


REV	DESCRIPTION	BY	DATE	APPR
C	RELEASE PER ECR 7009	LO	9/6	MM



CABLE TRIMMING DIMENSIONS

NOTES:

- MATERIALS:
 BODY AND FERRULE: BRASS PER ASTM B16
 CONTACT: COPPER ALLOY
 INSULATOR: TEFLON PER ASTM D1710
 SPRING WASHER: PHOSPHOR BRONZE PER ASTM B103
 CLIP RING: BERYLLIUM COPPER PER ASTM B194
- FINISH:
 BODY AND CONTACT: .000030 MIN. GOLD PER MIL-G-45204 OVER
 .000050 MIN. NICKEL PER QQ-N-290
 FERRULE AND SPRING WASHER: .000005 MIN. GOLD PER MIL-G-45204 OVER
 .000050 MIN. NICKEL PER QQ-N-290
 CLIP RING: .000100 MIN. NICKEL PER QQ-N-290 OVER
 COPPER FLASH
- FOR USE WITH .141 SEMI-RIGID CABLE OR EQUIVALENT
- FOR CABLING PROCEDURE USE CAP 5-09 WITH TRIMMING DIMENSIONS SHOWN.

PER ASME Y14.5M-1994 UNLESS OTHERWISE SPECIFIED: DIMENSIONS ARE IN INCHES (MM) TOLERANCES: DECIMALS .xx ± .01/0.254 .xxx ± .005/0.127 ANGLES ± 2° SCALE: 6:1		Litton Winchester/Retconn 400 Park Road Waterbury, Connecticut 06795	
CUSTOMER DRAWING		TITLE RDM STRAIGHT PLUG	
DRAWN JWH	DATE 9/6/01	CHECKED [Signature]	DATE 9/12/01
APPROVED [Signature]	DATE 9/12/01	APPROVED [Signature]	DATE 9/12/01
A		200-510-1410G	Sht. 1 OF 1 REV. C